

Daido Corporation of America, one of the leading roller chain manufacturers in the world, is pleased to announce a strategic alliance with Murtfeldt GmbH, the German manufacturer of chain and belt guides and tensioner products, as well as, slide profiles and custom plastic parts patented worldwide.

Please contact Daido for a Murtfeldt tensioner and guide catalog or any of your chain drive requirements.

guides & tensioners



P.O. Box 7659 • 1031 Fred White Blvd. • Portland, TN 37148
 PH: 866-219-9972 • FAX: 615-323-4015 • www.daidocorp.com
 TOLL FREE

DCA10012014



chain & belt tensioners

tensioner sizes



SPANNER BOX® SPANNER BOY®

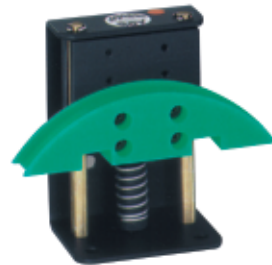
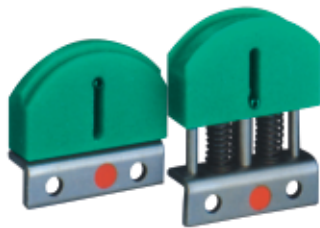
Variable,
Self-Adjusting
Tensioning

Reduces Chain
& Belt Wear

Reduces
Vibration &
Associated
Noise

Stainless Steel
Housings
& Hardware
Optional

Temperature
Ranges From
-10°F thru 140°F



MINI TENSIONER

ANSI Single: 25-35
Double: 35
ISO Single: 06B
Double: 06B-2

Tension range: 2.8-19 Lbs.
Travel length: 0.6 In.

SPANNER-BOY®

ANSI Single: 25-60
Double: 35-50
Triple: 35
ISO Single: 06B-10B
Double: 06B-10B
Triple: 06B

Tension range: 7-29 Lbs.
Travel length: 1.6 In.

SPANNER-BOX® SIZE O

ANSI Single: 25-60
Double: 35-40
ISO Single: 06B-10B
Double: 06B-08B

Tension range: 7-29 Lbs.
Travel length: 1.6 In.

SPANNER-BOX® SIZE 30

ANSI Single: 25-80
Double: 35-60
Triple: 35-40
ISO Single: 06B-16B
Double: 06B-12B
Triple: 06B-08B






Tension range: 7-88 Lbs.
Travel length: 1.6 In.

SPANNER-BOX® SIZE 1 & 2

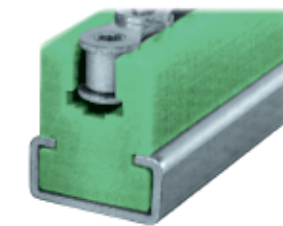
ANSI Single: 25-120
Double: 35-120
Triple: 35-100
ISO Single: 06B-24B
Double: 06B-24B
Triple: 06B-20B

Tension range: 7-175 Lbs.
Travel length: 1.6/2.4 In.

5 slide profile forms

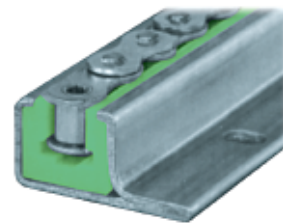
	Arc - largest contact area		Semi-circular - tight spaces
	Black - heavy duty		Return - larger turns (up to 180°)
	Sprocket or roller - high speeds/friction		

guide profiles



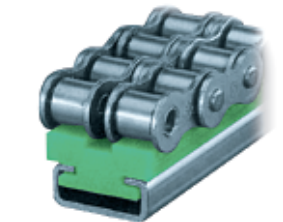
TYPE CKG

ANSI 35-140
ISO 06B-28B
Galvanized or stainless steel channel
10 feet or 2 meter lengths



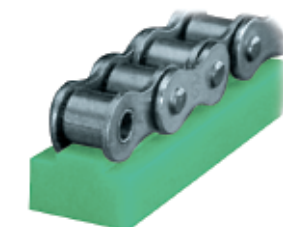
TYPE CKG15V

ANSI 35-60
ISO 06B-12B
Mounting flange type channel
Galvanized or stainless steel
10 feet or 2 meter lengths



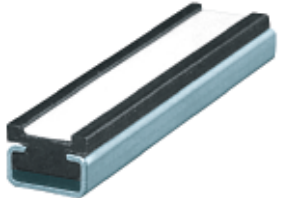
TYPE CT - DOUBLE STRAND

ANSI 35-2 to 160-2
ISO 06B-2 to 32B-2
Galvanized or stainless steel channel
10 feet or 2 meter lengths



TYPE T

ANSI 35-160
ISO 06B-32B
Chain guide without mounting channel
10 feet or 2 meter lengths



TYPE FRC

Gear Belt sizes: 1/5" x 3/8", 3/8" x 1/2"
3/8" x 3/4", 1/2" x 3/4"
3/8" x 1", 1/2" x 1", 1/2" x 1 1/2"
Material "S" black anti-static
Galvanized or stainless steel channel
10 feet or 2 meter lengths

MATERIAL "S" GREEN UHMW-PE

High Abrasion
Resistance

Low Coefficient
of Friction

Self Lubricating

High Impact
& Breaking
Strength at Low
Temperatures
of up to -415°F

Vibration
Dampening
Characteristics

FDA Approved

chain & belt guides

guide material range

Material "S" Green	UHMW-PE with excellent friction properties for general use.
Material "S" 8000®	Economic alternative with excellent sliding properties.
Murlubric®	Oil-filled cast nylon for high impact applications.
Murylon®	For high temperatures caused by friction.
Murytal®	High strength and rigidity under long term stresses and chemical atmospheres.
Murpec SP	Highest performance material with greatest PV value.